



HAVILAND *Heritage*

MUSEUM GRAND OPENING

Antique Thresher Show Weekend August 25, 2018



Haviland Heritage Foundation and Museum is thrilled to announce our grand opening, Saturday, August 25th, 10 a.m.-4 p.m. We will feature farm house memorabilia, old farm toys, and various farming displays. In conjunction with the Antique

Thresher show we will also host our annual Thresher Show breakfast from 7:30 a.m.-11a.m. in the the “Old District Office”.

Please visit the museum and enter a chance to win our Haviland Heritage Foundation and Museum Gift Basket.

Come Join Us for

Thresher Show
Breakfast in the
“Old District Office”

Saturday, August 25,
7:30 a.m. till gone

MENU

Biscuits and Gravy

Breakfast Burritos

Cinnamon Rolls

Sweet Breads

Coffee



GRAND OPENING MUSEUM SPOTLIGHT

Haviland Heritage Museum will be featuring a Victrola from the Ron Kendall family. It has been in the family for 60 years. Ron remembersreceiving the Victrola from the family of Mike and Rosie Backman.



We will also be featuring a historical painting by Mort Kunstler “America’s Artist” purchased by W.A. Matthews from the Hammer Galleries in New York. The painting depicts the Stroud family farm in Hutchinson Kansas, in the fall of 1917, threshing wheat.

90TH ANNUAL PLAY DAY, FRIDAY, SEPTEMBER, 28



The 90th annual Haviland Play Day will be held Friday, September 28 in downtown Haviland. The day will begin with a FREE pancake and sausage breakfast in the Thompson Gymnasium at USD #474, from 7-8:30 a.m. Chris Cakes Inc. will be on hand, flipping flap jacks with flair.

present at the very first Play Day in 1928!

Following the parade the annual student foot races of students will take place on the Haviland State Bank lawn on Main Street, just north of the bank. Some bleacher seating will be available, and plenty of room is available for spectators who bring lawn chairs as they reminisce of Play Days gone by. Other race activities planned are egg races, hoop races and alumni races for everyone.



Above: First Play Day. Over 1500 attended

Below: Play Day 1983.

As always, the annual parade will begin at 9 a.m. and will start at the corner of Poplar and Main Street and finish at the railroad tracks. Dignitaries including the honorable Governor of the State of Kansas Jeffery Colyer, State Commissioner of Education Randy Watson, and 33rd District State Senator Mary Jo Taylor will participate in the parade in honor of the 90th celebration. Grand Marshalls of the parade will be Haviland citizens who were

Lunch will be served in the Grade School cafeteria from 11 a.m. to 1 p.m. The 8th grade class will be serving the fundraiser meal.

TRIVIA ANSWERS:
 1) ADA LARUE BEVAN (SNEED)
 HERMAN BEVAN, CORINE MINOR
 2) HOME OF DR GLENN AND SUE LEPPERT

HHF 1ST ANNUAL CLASSIC CAR SHOW

Celebrating 90th Annual Play Day

- * Parade at 9 am
- * Show at corner of Kingman and Elm starting after the parade
- * Dash plaques awarded to all participants.
- * One free lunch to all registered participants.
- * Prizes awarded.
- * Discounted lodging at Best Western in Greensburg.



- * Peoples Choice Award
- * * Voting at registration booth ends at 2:00
- * Awards at 3:00
- * Come join us for cars, music, popcorn and fun!
- * Proceeds to benefit Haviland Heritage Museum Fund.

- * Preregister by September 21st for \$15, day of car show \$20
- * Contact Lori Binford at binford@havilandtleo.com or 620-388-0995 for details



The Haviland Heritage Foundation and Museum will hold its Annual Membership Meeting in the Grade School Cafeteria at 1 p.m. following the Play Day lunch. All members of the foundation are invited to attend the brief business meeting, after which open discussion and visiting/reminiscing is welcomed. PLEASE JOIN US FOR A DAY OF CELEBRATION AND FUN!

BIG KANSAS ROAD TRIP

In conjunction with the Kansas Sampler's Big Kansas Road Trip, Haviland Heritage Foundation and Museum held their first open house May 3-6, The theme honored Haviland Schools, Barclay College, celebrating the 100th Anniversary of Barclay's first graduating class, Haviland Telephone Company phone display, quilt displays and antique dishes.

Sheryl White was present promoting her book "Underground Angel".

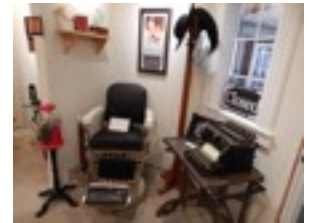
Over 200 visitors toured the museum during the three day event.



MUSEUM DONATIONS

Old Friends Church replica donated by Jerry and Barbara Halbgewachs, Herman and LaVonia Bevan's daughter.

Dave Miesenhiemer barber shop chair was donated by Gary and June



"JUST LIKE MOM USED TO MAKE"

Lemon Dessert

- 1 C sugar
- 1/4 C flour
- 1/8 t salt
- 2T melted butter
- 5T lemon juice
- Grated peel of one lemon
- 3 well-beaten egg yolks
- 1 1/2 C milk, scalded
- 3 stiff-beaten egg whites

Combine sugar, flour, salt and butter; add lemon juice and peel.

Add egg yolks to milk while stirring slowly so that eggs will not scramble. Add combined sugar, flour, salt, butter, juice and peel mixture to egg yolks and milk and mix well. Fold in egg whites and pour into greased 1 1/2 to 2 quart

dish. Bake in pan of hot water 325* for 45 minutes.

Lucy Mae Meireis

This was a favorite family dessert that Mother used to make. As it bakes, the flour and egg white mixture rises to the top for a cake topping, leaving the soft lemony pudding mixture in the bottom. When you serve, place the cake side down in the bowl, so the pudding is on the top. I don't know where she got this recipe, but it is yummy!

Shari (Meireis) McAfee



PSALM 31

IN YOU O LORD I PUT MY TRUST; LET ME NEVER BE ASHAMED;
DELIVER ME IN YOUR RIGHTEOUSNESS.

Picture Trivia



Do you recognize this brother and sister who are going for a stroll down the sidewalks in Haviland?

This house was built in 1903. Several years later they raised the roof on this house for a second story....

Do you know who lives here today?

(Answers on page 2)



HHF MEMBERSHIP

Individual Membership

\$50 for a lifetime membership or \$10 for an annual membership.

Family Membership

\$50 for the first family member and \$10 for a spouse and each dependent child.

Business Membership

\$30 for an annual membership

Donations of historical items and monetary gifts are always welcome.

Learn more about HHF at havilandheritage.org

WHATS INSIDE

HHF MUSEUM GRAND
OPENING *page 1*

ANTIQUÉ THRESHER
SHOW BREAKFAST *page 1*

90TH ANNUAL PLAYDAY
CELEBRATION *page 2*

CHRIS CAKE PANCAKES INC
page 2

1ST ANNUAL CLASSIC CAR
SHOW AND PARADE
page 2

“JUST LIKE MOM USED TO
MAKE”
page 3

HAVILAND Heritage

PO Box 85

Haviland, KS 67059

Boxholder

Haviland, KS 67059